



Client Focus:

Pharmacy



Power your supply chain transformation:

- ▶ **Efficient Stocktaking** – Enjoy line-by-line reporting for quick and accurate inventory management.
- ▶ **Manage Your Risk** – Falsified Medicine Directive (FMD) barcodes can be scanned and decoded, ideal for business transfers and product expiry risks.
- ▶ **Catalogue Builder** – Easily merge Chemist+Druggist (C+D), Irish Pharmacy Union (IPU) data, wholesaler listings, and EPOS system outputs to create a customised catalogue.



Stocktake

For financial year-end processes, internal financial control, and business transfers, a precise and efficient stocktake is essential. Signetor's barcode scanning system streamlines the process, providing a detailed, line-by-line record of all stock items.

The system integrates data from various sources, including C+D and IPU datasets, chosen wholesalers, and EPOS exports, ensuring accurate product capture and pricing.

Signetor scans both 1D (GTIN) retail barcodes and GS1 Data Matrix Falsified Medical Directive (FMD) barcodes, allowing a single system to capture prescription, over-the-counter, beauty, and health products.



Falsified Medicine Directive (FMD)
GS-128 Barcode Structure
(01) Product ID - GTIN 14
(17) Expiry Date
(21) Serial Number
(10) Lot Number



Manage Your Product Expiry Risk

Scan the FMD barcode, and Signetor decodes the product's GTIN, expiry date, serial, and lot number. This enhances visibility into financial risks tied to product expiry at each location. With early warnings of inventory expiry, business managers can take proactive steps, reducing costly inventory write-offs.

Retail Barcodes

Quickly scan products allowing line by line product identification and quantity capture.

Products without barcodes, or those with unscannable or damaged barcodes, can be manually entered into the scanner using the part number, ensuring 100% product capture and simplifying report generation.

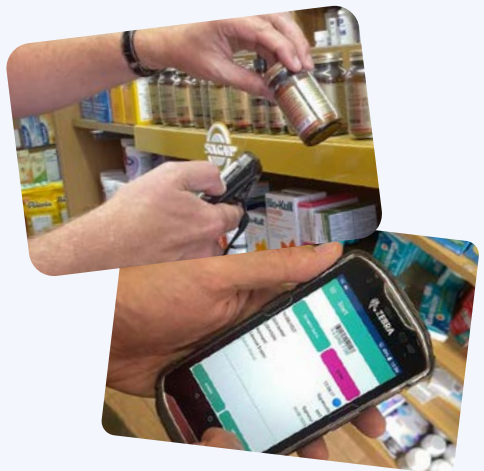
Items not in the data set can be recorded as exceptions. The system captures a photo of exception items, which is processed on the Signetor management portal and added to



your data pool. We believe exceptions should only happen once, reducing the number of unidentified items over time.

Building Your Catalogue

Signetor provides C+D and IPU catalogue datasets. Customers can add product information and pricing from various wholesalers and EPOS system exports. Our goal is to ensure maximum data coverage before stocktaking, minimizing exceptions during the physical count and saving valuable time. In addition to product loading, you can also include your unique classification for organisation-specific reporting.



Location Identification

Each pharmacy is identified by one or more location barcodes. A pharmacy may be identified as a whole unit or subdivided into sections like retail, dispensary, and stockroom. These physical areas help track where products are stocked and allow for comparisons over time when reused.

User Identification

We recommend setting up each stock taker in the system and assigning them a unique PIN and barcode. This provides an audit trail, so any follow-up questions can be easily addressed by identifying who scanned which items.

Service Options

- ▶ **Fully Managed Stocktake** – Access a Signetor Stocktake Partner across the UK & Ireland to carry out your external count.
- ▶ **In-House Self-Scan** – Signetor or Signetor Stocktake Partners can set up the system and supply all hardware, enabling pharmacy staff to conduct their own count.
- ▶ **Support** – We assist in setting up your system, loading data, meeting reporting requirements, and providing support during your physical count.

Reports

- ▶ Stock value by location & category
- ▶ Expired stock and expiration dates (requires FMD barcode scanning)
- ▶ Audit trail with scan details: stock taker, location, product, date, and time
- ▶ Actual vs Expected stock levels





About Signetor

Founded in 2017, Signetor specialises in healthcare. We have developed systems to work in this demanding environment and built a barcode catalogue of over 5 million clinical and pharmacy products. Today, our system serves both large chains and independent pharmacies. We're committed to continuously improving our system's performance, expanding our product data, and enhancing the support we provide our partner organisations.

Partnerships



Microsoft
Partner



Service Offerings



HARDWARE & REPORTING ONLY

Hardware Application
Included

Remote Training &
Support

Client Provides Staff

Reports as Required

£



HARDWARE, REPORTING & TRAINER

Hardware Application
Included

Trainer Provided

Client Provides Staff

Reports as Required

££



FULLY MANAGED STOCKTAKE

Hardware Application
Included

Project Manager
Provided

Staff Provided

Reports as Required


£££

Contact

Please contact us to discuss your requirements:

 www.signetor.com

 contact@signetor.com

 +44 (0)333 090 2337